

REAL ESTATE AUCTION

TIMED ONLINE

OPENING: TUES, DEC 10 | CLOSING: TUES, DEC 17

Five Bedroom Home on 34.57 Surveyed Acres

Bidding Closing at 1PM

Located 1.5 miles east of Bonaparte, IA on Hawk Drive to 23894 Hawk Drive

Perched high above the Des Moines River and surrounded by timber, this multi-level home offers stunning views of the timber and river from several rooms and its spacious deck. This property offers a perfect blend of indoor and outdoor space in a beautiful, secluded setting.

Open House on Tuesday, December 3 from 1-2PM

Commercial Building Overlooking Des Moines River

Bidding Closing at 2PM

Located at 603 1st Street, Bonaparte, IA

Here is your chance to buy a building located along the Des Moines riverfront in Bonaparte, IA. This auction will be for the real estate only; All equipment will be sold separately.

Open House on Tuesday, December 3 from 2:30-3:30PM



Van Buren
COUNTY
Bonaparte,
IOWA



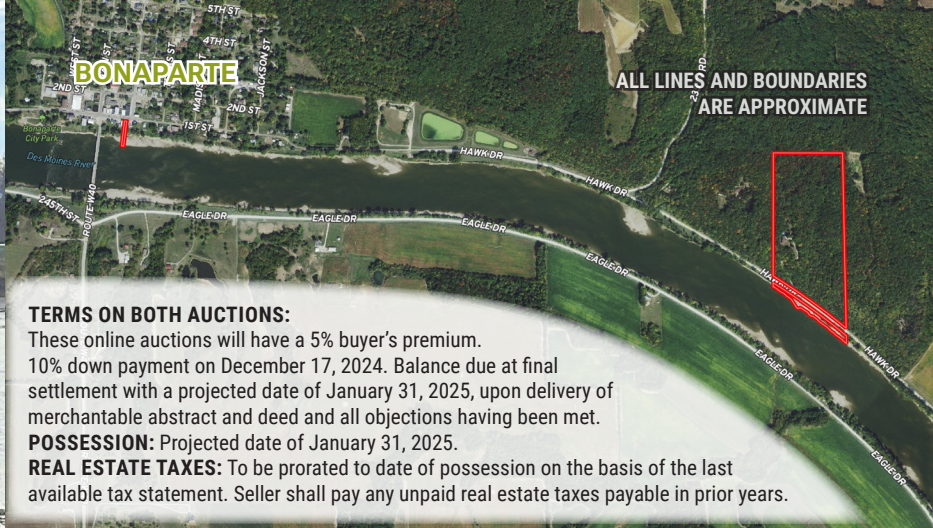
SteffesGroup.com | (319) 385-2000

Steffes Group, Inc., 2245 E Bluegrass Rd, Mt. Pleasant, IA 52641



Announcements made the day of sale take precedence over advertising.





ALL LINES AND BOUNDARIES ARE APPROXIMATE

TERMS ON BOTH AUCTIONS:

These online auctions will have a 5% buyer's premium. 10% down payment on December 17, 2024. Balance due at final settlement with a projected date of January 31, 2025, upon delivery of merchantable abstract and deed and all objections having been met.

POSSESSION: Projected date of January 31, 2025.

REAL ESTATE TAXES: To be prorated to date of possession on the basis of the last available tax statement. Seller shall pay any unpaid real estate taxes payable in prior years.



Scan the QR codes for complete auction details.



Steffes Group, Inc.
2245 E Bluegrass Rd,
Mt. Pleasant, IA 52641

PRSTD MKTG
US POSTAGE
PAID
FARGO, ND
PERMIT #315



Contact Steffes Group Representative
Mason Holvoet, (319) 470-7372

Mason Holvoet - Iowa Real Estate Salesperson S69890000

Closing Attorney: *Alicia M. Stuekerjuergen*
of *Stuekerjuergen Law Firm, PLC*